



Cavalier King Charles Spaniel Club of NSW Inc.

Affiliated with Dogs NSW

December 2018 - January 2019



Newsletter



Club Organisation

Please take the time to Congratulate your 2018 - 2019 Cavalier Club of NSW Comittee Members.

PATRON	Mrs Jeanie Montford
PRESIDENT	Jeanie Montford PO Box 94 Round Corner NSW 2158 9654 1203
VICE PRESIDENT	Karen Paul
SECRETARY	Laurie Smith 5 Pandora Place Tahmoor NSW 2573 ckcsnsw@bigpond.com
TREASURER	Lyn Archer 44 Moss Street West Ryde NSW 2114 9858 2595 larcher06@optusnet.com.au

COMMITTEE

Kerry Rolfe	48480222
Julie Christie	47543129
Heather Lenihan	98321918
John Christie	47543129
Sondra Boyce	63313790
Chris Smith	46819507
Karen Camilleri	0431649700

PET REFERRAL	Robyn Buckland 9606 5114
RESCUE OFFICER	Rhonda Callaghan 4296 2022
LIFE MEMBERS	Mrs Jeanie Montford Mrs Rhonda Callaghan

Specific Enquiries regarding:

CLUB SHOWS	Show Secretary TBA
ASSISTANT SECRETARY	Chris Smith
MEMBERSHIP	Kerry Rolfe
YEAR BOOK	John Christie ckcsconsw@ozemail.com.au

HEALTH	Karen Camilleri
WEBSITE	John Christie
TROPHIES	Karen Paul
NEWSLETTER	Julie Christie
EVENTS	Heather Lenihan

Any other subject should be referred to the Secretary.



Shows and Events

2018 Point Score Results

SENIOR

1ST	DABENVILLE GLITTER IN THE AIR	20
2ND	COLOORA DESIGN BY TIME	19
3RD	KALIAK KRAKER JACK	16
4TH	CARIBELLE ICE COOL BUT COLD (AI)	10

JUNIOR

1ST	CAPERWAY MYSTREY N MAGIC	15
2ND	CAVHILL EMPRESS	8
3RD	ALEXABELLE PENNYS RISING STAR OF CAVALIERLOVE	7
4TH	CAVALIERLOVE FLAME BURNS ON	7

STUD DOG

1ST	COLOORA DESIGN BY TIME	31
2ND	OUZLEWELLS BERTIE WOOSTER (IMP UK)	24
3RD	CARIBELLE LOVE EM FORGET EM	19
4TH	COBBERTS COCKNEY REBEL (IMP UK)	18

BROODBITCH

1ST	LEISUREVIEW ROLLING STONE	26
2ND	CAVAILERLOVE POLLY'S PLEASURE	20
3RD	COLOORA RUBY SLIPPERS	19
4TH	CAPERWAY SWEET DREAM	15

NEW MEMBER- SENIOR

GARY SMITH

NEW MEMBER-JUNIOR

GARY SMITH



Championship Show 15th-16th September 2018

Judge Mrs Elaine Waddington UK (Spindlepoint)

Critique

I would like to thank the committee for the invitation to judge at your show. Thanks must also go to everyone who helped to make our visit go so smoothly – to the people who ferried us from Sydney to our hotel and to the show and back each day; to my excellent steward Janine; to Janice Humphries for showing us the Blue Mountains and the Dingo Sanctuary and to Jeanie Montford for transporting us and putting us up in her lovely home. I would also like to thank all of the exhibitors for entering your dogs and for accepting my decisions so sportingly.

Overall I found the dogs to be of good breed type and was delighted to find that the majority of my entry had the correct flat skull and high set ears and also with the right amount of length of leg which gives good balance. Mouths were a problem in both dogs and bitches with a number being undershot but I was disappointed to find some with dirty teeth, even in the puppy classes!

I felt that the strength of the entry in dogs lay in the earlier classes, which bodes well for the future. Blenheims dominated the placings as I found that most of the wholecolours were too deep in the stop and this spoilt their expression. A number of dogs had light eyes and I did penalise this as the dark round eyes enhance the soft, gentle expression of the Cavalier.

My bitch line up reflected the quality of most colours and I was pleased to discover that my bitch CC went to a seven year old tricolour who was so full of life.

BEST IN SHOW – Ch Caribelle Ice Cold But Cool (ai)
R/U TO BEST IN SHOW – Sup Ch Melloway Magnifique
DOG CHALLENGE – Ch Caribelle Ice Cold But Cool (ai)
RES DOG CHALLENGE – Cavalierlove Flame Burns On
CHALLENGE BITCH – Sup Ch Melloway Magnifique
RES CHALLENGE BITCH – Ch Lookingglass Incandescence
BEST BABY – Merseyport Marbella (ai)
OPP BABY – Merseyport Bellissimo (ai)
BEST MINOR PUPPY – Cavalierlove Proud N Cool
OPP MINOR PUPPY – Brades Love Couture
BEST PUPPY – Ceellen Witches Britches
OPP PUPPY – Alexabelle Reign Sypreme
BEST JUNIOR – Cavalierlove Flame Burns On
OPP JUNIOR – Matmor In The Society Pages
BEST INTERMEDIATE – Ch Caribelle Ice Cold But Cool (ai)
OPP INTERMEDIATE – Ch Jenawyn Firecracker
BEST LIMIT – Jenawyn Precious Cargo
OPP LIMIT – Caribelle Love Goes On
BEST STATE BRED – Ch Kaliak Kraker Jack
OPP STATE BRED – Ch Dabenville Glitter In The Air
BEST AUST BRED – Ch Lookingglass Incandescence
OPP AUST BRED – Ch Jenawyn Wildfire
BEST OPEN – Sup Ch Melloway Magnifique
OPP OPEN – Ch Coloora Designed By Time
BEST NEUTER – NZ Ch Grd Ch Neut Ch Innesveil Classic Design
OPP NEUTER – Cavhiway Bilbo Baggins
BEST BLENHEIM – Ch Eireannmada Kinky Boots
BEST TRICOLOUR – Ch Lookingglass Kings Daughter
BEST BLACK & TAN – Innesveil Rhythm At Midnight
BEST RUBY – Ch Matmor Remy Martin
JUDGES CHOICE VETERAN – NZ Ch Grd Ch Neut Ch Innesveil Classic Design



Cavalier King Charles Spaniel Club of NSW Inc.

Newsletter

Baby Puppy Dog (10, 2 absent)

- 1 Madigan's Merseyport Bellissimo (ai) Good substance to this blenheim baby who was almost 6 months old. He had dark eyes and pigment, scissor bite and a gentle expression. He was well constructed with good neck and shoulders, had good angulation all round and moved with drive.
- 2 Darwen's Elfking Some Like It Hot at Edenridge. Another blenheim who was almost 6 months old but who was not yet as well developed as 1st. Pretty head with dark round eyes and black pigment, level topline and he moved with style and elegance.
- 3 Quigley's Dompentan a Time To Shine. Just 3 months old so giving a lot away in maturity, this blenheim baby had an attractive head with dark round eyes and moved well for one so young. I felt that this puppy shows promise of great things to come.
- 4 Browne's Eireannmada Dick Tracey (ai) This 5 month old tricolour was well broken and although he had a narrow blaze this did not detract from his sweet expression. Moved well showing off his good angulation, especially at the rear
- 5 Camilleri's Lookingglass Ruling Prince. Well broken blenheim who had dark eyes and pigment, correct tailset and well angulated at the rear.

Minor Puppy Dog (7,0a)

- 1 Donahue's Cavalierlove Proud N Cool. I liked the style of this 7 month old dog and see that he is by my BIS winner. He has a pleasing head with almost flat skull, long ear leathers, dark round eyes, correct mouth and black pigment. He was well balanced with a straight front, nicely constructed all through and he moved freely around the ring.
- 2 Schmidt's Brades Just Gold. Well broken blenheim in a slightly bigger frame but with a beautiful head and a gentle expression; he had a good reach of neck and was well constructed throughout and had a good tailset and croup.
- 3 Holtkamp's Chevalove Hugo Boss. This blenheim dog was slightly longer in muzzle but when the head develops and fills under the eyes this dog could be a contender for higher awards. He had a level topline and good tailset and croup and moved OK.
- 4 Wynn's Jenawyn Champagne Spritzer Just 6 months old, this lightly marked blenheim had the desired lozenge with dark eyes and pigment and was well balanced.
- 5 Munro's Chevalove Red Storm Rising. Another 6 month old baby, this time a ruby and he was well made, had a level topline and moved with drive. Unfortunately he did not like the sun and refused to open his eyes fully and so it was difficult to assess his expression. A pity as I did like this dog.

Puppy Dog (5,0a)

- 1 Boyce's Alexabelle Reign Supreme. I liked the size, balance and breed type of this 9 month old blenheim who had lovely dark eyes, scissor bite and straight front; he moved with drive, keeping a level topline and his hocks were well let down.
- 2 Boyce's Alexabelle Chester of Sorts, this was the litter brother of 1st place and many of the same remarks apply just preferred the overall balance of 1st.
- 3 Montford's Elvenhome Fever Pitch (ai) This blenheim dog was well constructed all through and had the most gorgeous large dark round eyes, scissor bite and ear leathers; preferred the size of 1st and 2nd.
4. Munro's Chevalove Lightning Jack. Heavily marked tricolour of good breed type with dark eyes and pigment, kind expression but would prefer a larger eye. He had a straight front and moved OK but tended to lose his topline on the move.
- 5 Morris' Coloor Ice on Fire. Heavily marked blenheim who was well constructed with dark eyes and pigment but a little too deep in stop for my preference which does tend to spoil the gentle expression.

Junior Dog (9,0a)

- 1 Donahue's Cavalierlove Flame Burns On . I liked the size and shape of this well balanced 10 month old blenheim dog who had a flat skull, dark round eyes and black pigment, scissor bite and a soft gentle expression. His blenheim coat has a white collar and is coming in well for his age; he was soundly made, moved with style and had good breed type. RCC
- 2 Duffy's Ch Caperway Mystery N Magic 16 month old well broken blenheim complete with lozenge, attractive head with dark eyes and pigment and straight front but would prefer more angulation at the rear.
- 3 Perkiss' Ch Tikimi Smooth Criminal. This was a soundly constructed dog in a bigger frame with a straight front, moderate chest and adequate neck. Pleasing head and he moved with drive.
- 4 Morris & B Lloyd's Coloor Cease Fire Well broken blenheim complete with spot, skull more rounded than I prefer, but he had lovely dark round eyes, would prefer darker nose pigment but he moved freely and



Cavalier King Charles Spaniel Club of NSW Inc.

Newsletter

with drive

5 Oliver's Jezzamont Rabble Rouser This 13 month old heavily marked blenheim had dark eyes, although I would have preferred them slightly larger, dark pigment and he moved OK.

Intermediate Dog (3,0a)

1 Caribelle Knls Ch Caribelle Ice Cold but Cool (ai) This richly marked blenheim entered the ring with style and elegance and oozed breed type. I loved his head with his almost flat skull, dark round eyes, black pigment, long ear leathers, correct mouth and good fill under the eyes. He was well balanced and had sound conformation with a straight front, depth of chest, good angulation all round and he moved freely and with drive. I loved him. CC & BIS

2 Munro's Ch Chevalove High Flyer This blenheim dog moved with drive and was well constructed all through; he had a good tailset and croup and short hocks. He had a pleasing head with long ear leathers but lost out to 1st on eye size and nose pigment.

3 Perkiss' Ch Tikimi the Power N The Passion . This ruby dog looked great in profile and stood four square showing off his level topline. He was well constructed and moved with elegance but I prefer a more shallow stop and rounder eyes.

Limit Dog (4,2a)

1 Wynn's Jenawyn Precious Cargo. A pleasing head on this richly marked blenheim who had a flat skull, dark eyes and black pigment. Good reach and drive on the move and he kept a level topline and had a good turn of stifle.

2 Perry's Belljari Frankie Kiss the Girl This black and tan dog's coat gleamed in the sunshine and he had long ear leathers, dark eyes and pigment and correct mouth, but I would prefer the stop to be more shallow. He had a level topline which he kept on the move and he showed well.

State Bred Dog (10,2a)

1 Axiak's Ch Kaliak Kraker Jack. I loved the style and breed type of this 8.5 year old richly marked blenheim who had an almost flat skull, long ear leathers, dark eyes and pigment and gentle expression. He was well angulated and moved with elegance keeping a level topline.

2 Morris' Ch Coloora Ice Maker. Well broken blenheim with long ear leathers, dark round eyes, black pigment, almost flat skull, straight front, adequate neck and who moved with drive.

3 Montford's Elvenhome Cassini (ai) Almost 12 months old this richly marked blenheim was full of himself and giving his handler a hard time but he had lovely dark eyes and black pigment and was well constructed, but a little deeper in stop than I prefer.

4 Smith's Dabenville My Little Goodie A happy dog who never stopped wagging his tail, well broken blenheim with straight front and moved well.

5 Wright's Ch Belljari Black Moon Rising. Lovely rich tan on this black and tan who moved well, it was good to see a wholecolour who was not too deep in the stop but I would have preferred a darker eye and pigment.

Australian Bred Dog (6,0a)

1 Wynn's Ch Jenawyn Wildfire. This blenheim dog was feeling the heat and not showing so well, but he had a lovely head with a flat skull, dark round eyes and black pigment, shallow stop and gentle expression. He was well constructed with layback of shoulder, straight front, good tailset and croup and turn of stifle. He looked good on the move keeping a level topline.

2 Morris' Ch Coloora Fly Me to the Moon. Rich tan on this quality blenheim boy who moved elegantly around the ring.

3 Wraith's Ch Matmor Remy Martin. A well constructed ruby who moved with drive and style keeping a level topline and with good tail carriage. He was a little too deep in stop which spoiled the picture for me.

4 Mcinnes' Nz Ch Ch Innesveil Classic Lover. Lightly marked blenheim of good breed type with pleasing head, but would prefer more angulation at the rear.

5 Camilleri's Ch Barakah Fiery Lord. Ruby boy with gentle expression and who moved well; I would prefer a darker eye .

Open Dog (3,0a)

1 Smith & L Morris' Ch Cooloora Designed By Time. This mature blenheim had a lovely gentle expression enhanced by his dark round eyes and framed with long ear leathers. He had good depth of chest, level topline, turn of stifle and correct tailset and croup and he moved freely showing off his short hocks.



Cavalier King Charles Spaniel Club of NSW Inc.

Newsletter

2 Egan/Weekes' Ch Melloway Kings Ransom. Heavily marked tricolour with rich tan markings; he was short coupled and had long ear leathers, dark eyes and a sweet expression which is difficult to find in this colour.

3 Boyce's Ch Edenridge Power of One This was a quality ruby and had a flat skull, dark eyes and pigment, long ear leathers but was really feeling the heat and lost his topline on the move.

Baby Puppy Bitch (12,3a)

1 Madigan's Merseyport Marbella (ai) Almost 6 months old this well broken blenheim puppy had good bone and substance for one so young, was well constructed and she moved with drive. She had a pretty head with almost flat skull, dark round eyes and had a good spring of rib; a promising puppy.

2 Quigley's Dompentan Bout Thyme. This 3 month old puppy moved around the ring so confidently and freely showing off her short hocks and good construction. Her blenheim coat was well broken and she had dark eyes and pigment. This is one who I could have smuggled in my suitcase as she shows lots of promise for the future but she lost out to 1st on maturity.

3 Duffy's Alsdenn Classic Charm. Almost 4 months and with a heavier marked blenheim coat, this puppy had a good shape in profile and had dark eyes and pigment and a sweet expression. I preferred the tailset and croup of 1st and 2nd.

4 Axiak's Kaliak Dream On. This was a nicely marked tricolour with a good neck and shoulders, level topline, correct tailset and turn of stifle. She needs time to body up, but looks good in profile. Dark nose pigmentation and dark eyes, but I would prefer them a little larger

5 Chalmers' Chartruese Smokin Hot But Cool. Another 3 month old blenheim who was almost flat between the ears, had dark eyes and pigment and a sweet expression. She lost out on maturity.

Minor Puppy Bitch (6,0a)

1 Schmidt's Brades Love Couture. Well constructed 6 months old with good substance for her age and she moved soundly and with drive. She has an almost flat skull, dark round eyes, long ear leathers and gentle expression. She has good depth of chest, nice neck and layback of shoulder and rn of stifle. Her unusual blenheim markings could detract but she is well broken and of good breed type.

2 Munro's Chevalove Red Hot Lil Devil. 6 months old ruby bitch who had a flat skull, dark eyes, black pigment and a rich ruby colour to her coat. She moved with drive keeping a level topline.

3 Mcinnes Innesveil Northern Lights Good body on this lightly marked blenheim who had a pretty head with dark eyes and pigment and who moved well

4 Camilleri's Leisureview Flamdbutrfllykisses lovely head on this ruby bitch with large dark eyes and dark pigment. She looked good in profile but I would prefer more angulation all round.

5 Smith's Dabenville Keep An Eye On Me Well broken coat on this blenheim who moved well, she had dark eyes but I would prefer a more shallow stop and a little more length to muzzle.

Puppy Bitch (9,1a)

1 N Nade/L Hennessy's Ceellen Witches Britches. Nicely marked tricolour bitch with the required amount of tan, flat skull, scissor bite, long ear leathers and a soft gentle expression which is so difficult to find in a tricolour; a short coupled bitch of the correct size and with good angulation all round .

2 Camilleri's Kandccamo Designed by Knight. A blenheim bitch of a good shape and size and who looked good in profile; her skull was almost flat and she had dark eyes and her ear leathers are coming in well.

3 Donahue's Cavalierlove Amorous N Ready Good neck and shoulders on this blenheim who had a straight front, level topline, dark eyes and pigment, but a little too deep in stop for my preference.

4 Montford's Elvenhome Believe in Love (ai) This was a sound, heavily marked bitch with good angulation all round, she had gorgeous dark round eyes but would have preferred a slightly shorter muzzle.

5 Munro's Chevalove Secret Affaire. Petite blenheim with dark eyes and pigment and she moved OK; would prefer a larger eye.

Junior Bitch (4,1a)

1 Wraith's Matmor in the Society Pages. I loved this ruby bitch and seriously considered her in the challenge. She looked attractive in profile with a good neck and lay of shoulder, straight front and level topline. She had a pretty head with a flat skull, large dark round eyes and pigment, scissor bite and was not too deep in stop. She moved well and always stood four square, should do well when she matures.

2 Madigan's Merseyport Celtic Honey. This well broken blenheim had an attractive head with almost flat skull, dark eyes and pigment, adequate neck, straight front , good forechest and she moved OK.

3 Gorton's Jezzamont Lady in Red. Lightly marked blenheim complete with spot; long ear leathers frame an attractive head, but she is lacking in body and needs more weight.



Cavalier King Charles Spaniel Club of NSW Inc.

Newsletter

Intermediate Bitch (7,1a)

- 1 Wynn's Ch Jenawyn Firecracker. I liked the style and outline of this richly marked blenheim bitch who had a flat skull, lovely dark eyes and black pigment and long ear leathers. She moved with drive, but I would have preferred better tail carriage.
- 2 Gilroy's Dougsba Ariodante Lovely rich tan on this tricolour bitch who had dark round eyes, black pigmented nose and a gentle expression. She had a good neck and shoulders and moved well.
- 3 Madigan's Merseyport Daddy's Girl. When she came into the ring I thought that this would be my winner with her dark round eyes, gentle expression and overall breed type, but I preferred the topline of the first two.
- 4 Brown's Farpor A Heart of Gold. I liked this ruby bitch in profile and she had long ear leathers and dark eyes but unfortunately was not moving well today.
- 5 Petersen's Ch Dapsen the Blonde Bombshell. This blenheim had long ear leathers, dark eyes and black pigment but was a little too deep in stop for my preference.

Limit Bitch (11,0a)

- 1 Caribelle Knls' Caribelle Love Goes On. Quality blenheim bitch who had good balance and was well constructed. She had a flat skull, dark eyes, scissor bite, black pigment, straight front, level topline, good turn of stifle, short hocks and she moved with drive.
- 2 Morris' Aksmada's Calista (Imp Pol) Lovely breed type on this blenheim bitch who had a flat skull, dark eyes and pigment and a kind expression. She had a straight front and moved with drive but had a tendency to fly her tail which spoiled her outline.
3. Donahue's Elvenhome Tender Kisses of Cavalierlove. Attractive head with dark eyes and long ear leathers. She moved happily but lost her topline on the move.
4. Camilleri's Kandccamo Baileys on Ice. Ruby bitch with good bone, flat skull, dark eyes but a little deep in stop for my taste, she moved OK
5. Boyce's Cavalierlove Magic Moments. Happy blenheim with typical head dark eyes and pigment but I would have preferred more neck to give better balance and the required elegance.

State Bred Bitch (6,2a)

- 1 Smith's Ch Dabenville Glitter in the Air. Good neck and shoulders on this blenheim bitch who had a straight front, a good tailset and croup, good bone and she moved soundly. Attractive head with a flat skull, dark eyes, would have preferred a darker nose pigment, long ear leathers, scissor bite and a gentle expression.
- 2 Donahue's Alexabelle Pennys Rising Star of Cavalierlove. Not as mature as 1st, but with a good depth of chest and she had an attractive head with dark round eyes, black pigment and gentle expression. She moved and showed well.
- 3 Duffy's Ch Caperway Sweet Dream. Flat skull, dark eyes, black pigment on this blenheim bitch, but a little deeper in stop than I prefer, a happy showgirl but would prefer a better topline on the move.
- 4 Munro's Nz Ch Ch Chevalove Chandon . This was a well broken blenheim who would benefit from losing a little weight; attractive head with flat skull, shallow stop and kind expression. I would have preferred a little more length of leg for perfect balance.

Australian Bred Bitch (4,2a)

- 1 Boyce's Ch Lookingglass Incandescence Just 18 months old this blenheim bitch, complete with lozenge, looked good in profile with moderate neck, spring of rib, level topline which she kept on the move and her tailset and croup were correct. She had a pretty head framed by long ear leathers and had dark round eyes and pigment. She moved elegantly and with drive. RCC
- 2 Camilleri's Ch Lookingglass Kings Daughter, This was a heavily marked tricolour with good balance, she had rich tan on her face, dark eyes and moved soundly.

Open Bitch (5,0a) This was a quality class.

- 1 Egan/Weekes' Sup Ch Melloway Magnifique This petite heavily marked tricolour just stole my heart and it was difficult to believe that she was 7 years old. She had a beautiful head with a flat skull, large dark round eyes, black pigment, scissor bite and a melting expression. She was so sound and well balanced with a straight front, level topline, spring of ribs, good angulation at the rear enabling her to move freely and with drive. BCC
- 2 Boyce's Cavalierlove Shooting Star I liked the size and substance of this blenheim girl who had good bone, moderate chest and level topline. She had a flat skull, dark eyes, black pigment, long ear leathers and a gentle expression and moved Ok but was a little proud of her tail at times.



3 Caribelle Knls Ch Caribelle Sheez No Lady. Nicely balanced blenheim who was very out of coat, she had an attractive head and good neck and shoulders and moved out well.

4 Munro's Ch Chevalove Imperial Design. Heavier marked blenheim with a kind expression, flat skull, dark eyes and she moved happily around the ring.

5 Lenihan's Cavhiway Precious S Angel. Nice overall type on this blenheim bitch complete with lozenge, she had dark eyes and a kind expression but I would prefer a better topline.

Judge Mrs Elaine Waddington UK (Spindlepoint)

December Meeting

Christmas Function. Bring a plate of nibbles and some drink.

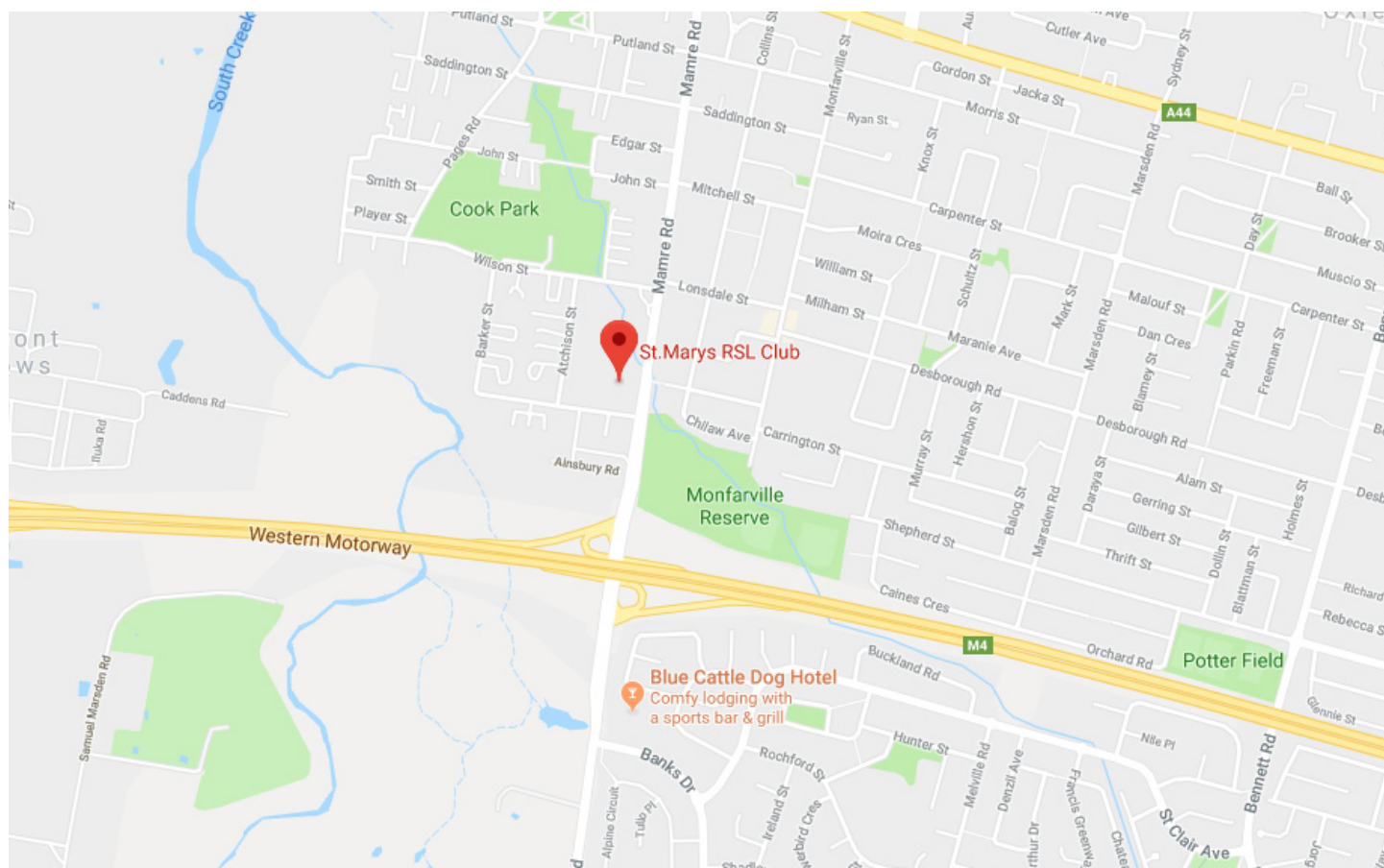
Will be held on **December 18th**

January Meeting

New Venue.

The Club has voted to no longer hold meetings at Dogs NSW. Rather meetings will be held at St Mary's RSL Club. Hall St, St Marys NSW 2760, just off Mamre Road at the M4 Junction. 5 mins from Dogs NSW.

Room, in Club to be decided, but for January, meet near the Cafe area to the left from reception. Please feel free to get yourself a brew or ale or wine or snack whilst we are there. There is plenty of space we can meet.





Dr Kay Pitkeathly BVSc

109 Billa Road, Corner Menai Road, Menai NSW 2234

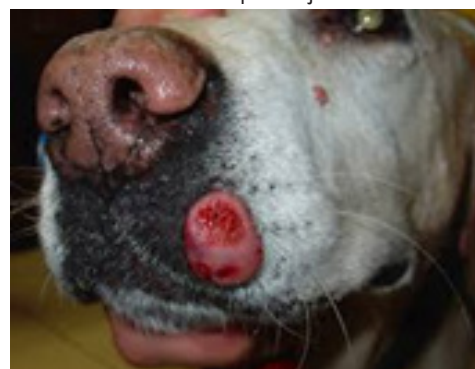
Telephone: (02) 9541 1455 Fax: (02) 9543 1756

menaivet@menaivet.com.au

Mast Cell Cancers

Mast cell cancers are cancer of a type of blood cell involved in the body's response to allergies. They contain large amounts of histamine, heparin and enzymes which break down protein. These are released when mast cells are triggered by your pets' immune system. Mast cell tumours usually develop in the skin and subcutaneous tissues on the body and legs. They can vary a lot in appearance. They can be raised lumps or just under the skin and they may be red, white, ulcerated

or swollen. They can appear to get smaller or bigger with inflammation. They can appear suddenly and grow very quickly. They can be up to 4cm in diameter, often look rubbery and hair is lost. With cancers, the type of cancer, the grade and the stage are all important in how your pet is and how they are treated.



The type of cancer, while your vet may be suspicious a mass is cancer, your pet would need a fine needle aspirate of mass, or a biopsy or having the mass cut out and histopathology of mass to determine the type of cancer that is the cell type that it is made up of.

The grade of cancer is determined by the pathologist after looking at the cells under a microscope. The higher the grade, the more aggressive the cancer.



Grade 1: non-malignant, may be large and difficult to remove but does not spread to other parts of the body. Many mast cell tumours are grade 1 and surgery will fix the problem.

Grade 2: cancer extends under the skin into the subcutaneous tissues. Cells are moderately differentiated. The cells show some abnormalities and may be malignant. Response to treatment can be unpredictable. This grade is the most common for mast cell cancers and the hardest to predict, often classified further into a low or high grade 2. (based on mitotic index)

Grade 3: this is the worst case, these originate deep below the skin, and are very aggressive and require extensive treatment.

Stage the stage of cancer is how advanced it is, and whether it has spread to lymph nodes or other parts of the body.

Stage 0. One mass in skin, no lymph node involvement.

Stage 1. One mass in skin, no lymph node involvement.

Stage 2. One mass in skin with lymph node involvement.



Cavalier King Charles Spaniel Club of NSW Inc.

Newsletter

Stage 3. Multiple large deep skin tumours with or without lymph node involvement.

Stage 4. One or more tumours with metastases and lymph node involvement. Also divided into sub stage a – no other signs and substage b which have other clinical signs. Visceral mast cell cancer is rare, but it has been reported with spread to lymph nodes, spleen, liver, blood and bone marrow and to pleura and peritoneum. Gastrointestinal ulceration may occur with vomiting, poor appetite and black tarry faeces.

So, when a mass is removed

Step 1 – send to pathology for histopathology to find out what type of cancer it is.

Step 2 - Find grade – pathologist normally grades cancer based on mitotic index and examination of cells under the microscope

Step 3 Staging – your pet needs to be checked by your vet including a fine needle aspirate of local lymph nodes. Often a buffy coat smear is done also looking for mastocytosis. If there is any sign of spread to the lymph nodes or bloods then xrays or ultrasound may be indicated to check liver, spleen and other lymph nodes.

Step 4. Immunohistochemistry or C – KIT mutational analysis is an option for mast cell cancers. This pathology test is done on the sample of tissue already at the pathologists. There is an extra charge. It is done as there is a link between the C-KIT ITD mutation, risk of recurrence, prognosis and treatment options.

Treatment depends on grade and stage:

Surgery is the treatment of choice. Surgical excision with wide margins can give a very good outcome for your pet. Often a second surgery is needed if pathologist believes there are abnormal cells at the edges of the wound. Some pets will suffer from Gastrointestinal ulceration this does not necessarily mean the cancer has spread to the intestines, but histamine release is causing problems. Gastrointestinal ulceration may occur with vomiting, poor appetite and black tarry faeces.



i.e. there is a risk that some cancer cells are left behind.
Other treatment options are

-Radiation

-Chemotherapy

. Some pets will suffer from Gastrointestinal ulceration this does not necessarily mean the cancer has spread to the intestines, but histamine release is causing problems. Gastrointestinal ulceration may occur with vomiting, poor appetite and black tarry faeces.

Often a pet will benefit from ancillary therapy for gut ulceration due to the effects of histamine release. Drugs such as cimetidine, ranitidine or omeprazole can help if poor appetite or other gut problems





Club Year Book 2019

Year Book Guidelines for Advertisers

<https://www.cavalierclubnsw.com/latest-news>

IF YOU NEED TO ENGAGE SERVICES TO CREATE YOUR ADVERTISEMENT, The following is a list of people whom may be contacted to provide services to create your copy for your advertising in the Club's Yearbook. The Copy format details are provided below, please forward this onto your Artist.

Stephanie Hart (USA) Sah64@aol.com
Sam Cole Surjan daisybellecavs@optusnet.com.au
Kacey Yates kacey.yates1@gmail.com

IF YOU ARE DOING YOUR OWN ADVERTISEMENT, The following provides details of the copy format that you must produce and provide to the Club to be added to the Club Yearbook for advertising. Diagram provided as sample reference.

Resolution: 300 DPI Minimum - 400 DPI Maximum.

Copy Size: To be provided to the Club A5, 148 x 210 mm + 5 mm bleed all sides (see example)

Bleed: You must allow the 5 mm in your image for bleed in your copy for colour printing to edge.

Margin: 10 mm. Put all content in the SAFE area. Avoid putting any important content in the margin This to allow for ring binding or other print / trimming adjustments.

Colour: Must be CMYK press ready. Note, colour variation may still occur with printing from your computer image.

Format: Only jpg or pdf format is accepted.

Content: Keep your content clear and concise and avoid cluttering of text and photos. Ensure your text is legible and only 2 photos per page. We would also like for advertisers to present pages in PORTRAIT, as this improves the overall presentation of the book.



The Club will be strict and reserves the right to reject any advertising copy that does not meet the standards above. to be added to the Club Yearbook for advertising. Diagram provided as sample reference.

GETTING IT DONE

Closing Date: 19th January 2019 - NO EXTENSION TO THIS DATE. Copy MUST BE provided by C.O.B

Copy: Advertising copy to be emailed to ckcconsnw@ozemail.com.au. No need to mail the hard copy.

Payment: Direct Deposit - Cavalier King Charles Spaniel Club of NSW Inc. BSB 032680 Account 112140. ADD your name as the description. Payment plans can be arranged in total confidence, contact the Club Treasurer Lyn Archer. PLEASE DO NOT MAKE PAYMENT until your copy has been approved and you have been advised to do so

Shipping: The Yearbook will be shipped by Australia Post to all advertisers.

Charges: \$50 for first page, \$45 for subsequent pages. + \$8 for postage and handling.

Cancellations: The Club will ONLY accept cancellations for full refund up until the closing date.



Club Meetings

GENERAL MEETING OF
THE CAVALIER KING CHARLES SPANIEL CLUB OF NSW INC.
Erskine Park on 25th Sept. 2018.

- 1 Attendance
Chair- Karen Paul. Committee 5. Members 1.
- 2 Apologies
As per book.
- 3 Approval of minutes of the previous meeting
Moved –C.Smith. Seconded – John Christie .
- 4 Business arising from the previous minutes.
Nil.
- 5 New members
Nil.
- 6 New titles.
Ch.Blakesleigh Hopeful Lulu. Owned/Bred by Miss S M Potter.
Grand.CH. Neut.Grand CH.Elflking Imogene Porridge.
Owned by Ms S A Donahue.Bred by J Paznikov.
Ch.Cavalierlove Flame Burns On. Owned/Bred by Ms S A Donahue.
Grand Ch. Elfking Imogene Porridge Ownd by S Donahue. Bred by J Paznikov.
Gr.Ch. Cavalierlove Pollys Pride Owned/Bred by S Donahue.
Gr.Ch. Sup.Ch.Cavalierlove Pollys Pride Owned/Bred by S.Donahue.
Ch.Cavalierlove Cockney Chaos. Owned/Bred by S.Donahue.
Ch.Cavalierlove Full On Addict. Owned/Bred by S.Donahue.
Ch.Konavan Proud N Sassy. Owned by S.Donahue. Bred by R.L.Attard.
Ch.Pabianpark Thyme Traveller. Owned/Bred Mr.W& Mrs.S Pabian.

Sporting.
Blakesleigh Romantic Dreamer CD Owned/Bred by S.Potter..
- 7 Correspondence.

Correspondence In.
Dogs NSW testing.
Acknowledgement by DogsNSW of receipt of Annual Report which had fulfilled all requirements of Dogs NSW>

Correspondence out.
Dogs NSW testing.
.
- 8 Treasurers Report.
No Report at time of meeting.

Cheques Raised Amount Payee Reason

Moved- Seconded-



Cavalier King Charles Spaniel Club of NSW Inc.

Newsletter

9 Reports –

Show:

Point Score Winners 2018.

Senior- Ch. Dabenville Glitter In The Air. Owned/Bred C.Smith.
Junior- Ch.Caperway Mystery N Magic. Owned/Bred R.Duffy.
Stud Dog- Ch Coloora Designed By Time. Owned.Smith/Morris Bred L.Morris.
Brood Bitch- Leisureview Rolling Stone. Owned C.Smith. Bred K.Paul.

Nominations for Easter 2020.

Only 1 nomination Ms R.Duffy. Carried unanimously by meeting.

As some exhibitors are unhappy about Veterans being paraded after lunch in front of the judge ,the meeting decided to return to the previous rules which states NO Veteran can be exhibited in any other class.

The revised pointscore rules were presented to the meeting and all present voted to accept them.

Rescue:

Members. The little Cavalier from the RSPCA is not ready to go to a new home yet and the eight year old surrendered to the Club last week is at the Vets today having a dental and updating her Inoculations. I have an interested new home for her from the large list of people looking for a Cavalier and we are still averaging three enquiries each day. If any of our Club members wish to re-home one of their dogs please let me know as we have plenty of customers wanting a Cavalier. That is all from me this month Regards Rhonda

Year Book:

Postage increased to \$8.00.

Health:

Feb 16th set for heart and eye testing.

Volunteers will be needed for organising and running on the day.Please help with this as

Karen is not available.

Events:

No reply yet Fun Day venue.

10. General Business

Marilyn Gill to do lecture on Newborn problems.(Follows Nov. Meeting).

Membership Email List.- Karen Paul has updated and sent out Invitations to non-listed.

New Printer/Scanner Purchased.

Alternate venue for club meetings suggested.Ie. St.Marys RSL.Check with Dogs NSW.

If there is regulations preventing alternatives.

There being no further business the meeting closed at 8.25 pm.



Administration

Change of Member Details

Please send to:
The Membership Secretary
5893 Federal Highway Wollongorong NSW
2581 or rolfegk@gmail.com

Provide your name

Change of Name:

Change of Address:

Change of Phone, Mobile
or Fax:

Change of Email

Kennel Prefix

Breeder's Directory

Please Add

☐

Please
Remove

☐

Title Notification

Copy of ANKC Registration Certificate showing title attached? YES / NO

What Title are you applying for?

Is this your first Title? YES / NO

e.g. Championship, CD, ADX, ET

NOTE: A separate application must be made for each title claimed and a copy of the registration certificate must accompany each application. Closing date for applications is the October meeting. Trophies are presented at the Christmas party (December Meeting) each year and members must be financial at that date (available to club members only). If you are unable to collect your trophy please send a cheque or money order for \$2.00 payable to the CKCSC of NSW to the Secretary to cover postage and packaging.

Please send to: The Secretary 5 Pandora Place Tahmoor NSW 2573

Health Register

Heart Register / MRI Register
Cross out not relevant

Please Add

☐

Attach details of new Heart and MRI
scans and send to The Health Officer,
Karen Camilleri,
email kccamo@tpg.com.au

Please
Remove

Name for removal

Membership Application Form

Kerry Rolfe (02) 4848 0222
rolfegk@gmail.com

Club website

<http://www.cavalierclubnsw.com/membership>

Should you be proposing a new member please ensure that they are aware of the dates for

December 2018 - January 2019

Page 15